

A Look at Private Drinking Water Systems in Upper-Middle Rideau Valley Watershed

The Mississippi-Rideau Source Protection Region (MRSPR) has begun a project to study private drinking water systems on select lakes in the Rideau Valley watershed, thanks to funding from the Ministry of the Environment, Conservation and Parks (MECP).

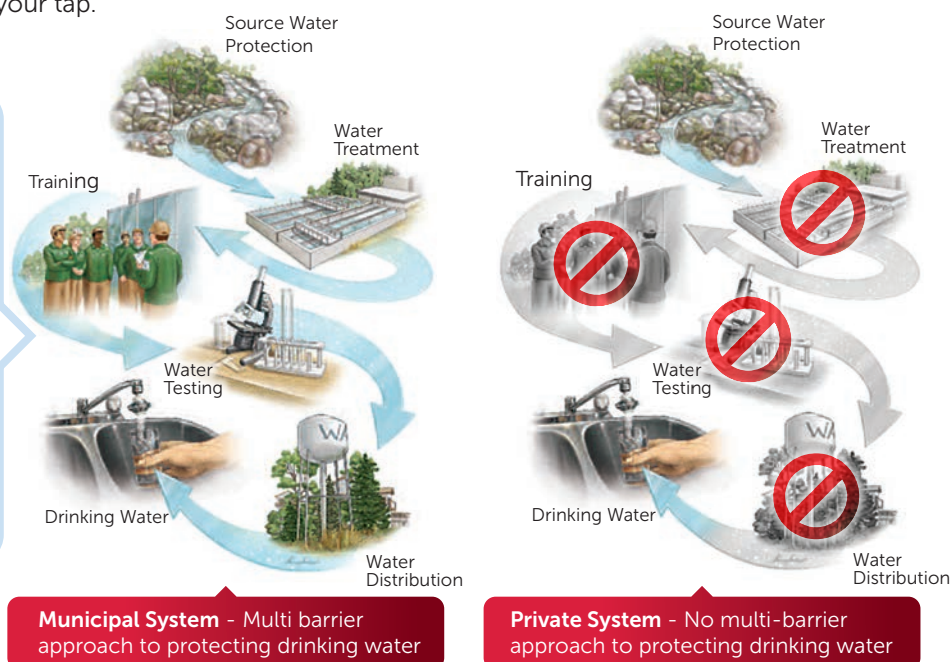
In Phase I of this project, beginning Summer 2022, MRSPR staff will characterize selected lakes (see map, Figure 1), conduct a Threats and Vulnerability Analysis, conduct outreach to lake residents, and estimate the number of residences in the vicinity which source their drinking water from private wells and surface water intakes. One component of the outreach is to conduct a survey (www.bit.ly/3nnl6JL) of lake residents that will be available from July 1st to August 31st 2022.

Phase II will include the development of educational materials for individuals with private wells and private surface water intakes to promote safe drinking water practices, as well as details on relevant local measures to address specific drinking water threats (i.e., septic re-inspection program).

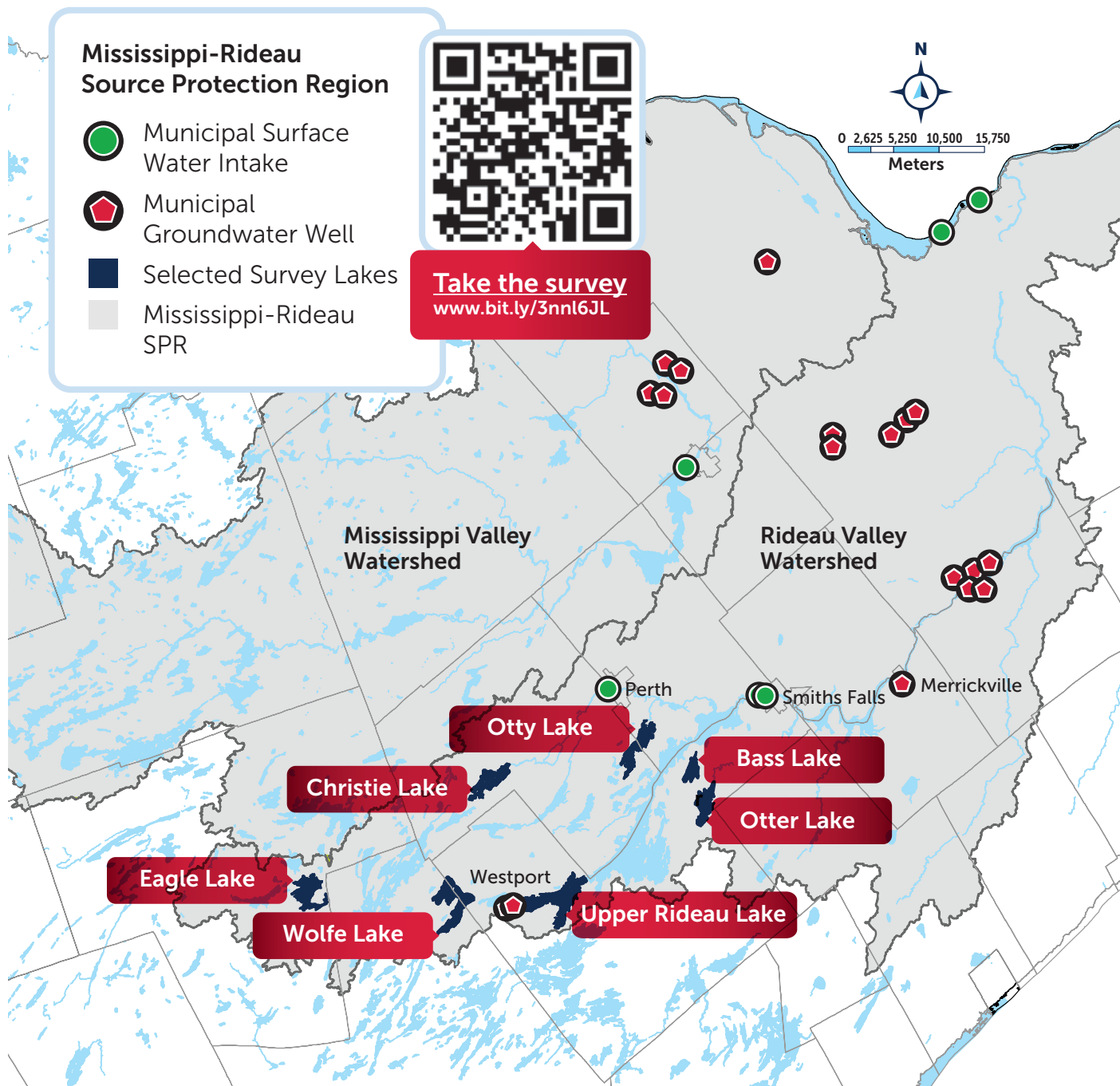
Background:

Ontario's *Clean Water Act* was created to ensure all drinking water systems are protected from current and future contamination. However, the MRSPR is currently focused on source protection for municipal drinking water systems, which complements the work of water treatment plant operators who ensure municipal drinking water is properly treated, tested and safely delivered to your tap.

While the *Clean Water Act* applies a multi-barrier approach for the protection of municipal drinking water systems, non-municipal drinking water systems do not have a similar level of protection measures in place.



Concerns have been raised about the safety of non-municipal water and that homeowners may lack adequate knowledge about proper private water treatment systems. To address these concerns, the MECP released an informational guide, *Best Practices for Source Water Protection*, to help residents assess their risks and properly protect their drinking water sources from contamination. www.ontario.ca/document/best-practices-source-water-protection



Projection: Universal Transverse Mercator, NAD83, Zone 18 North

Produced by the Mississippi-Rideau Source Protection Region, under License with the Ontario Ministry of Natural Resources and Forestry ' Queen's Printer or Ontario, 2022.

While the MRSRP makes every effort to ensure that the information presented is sufficiently accurate for the intended uses of the map, there is an inherent margin of error in all mapping products, and accuracy of the mapping cannot be guaranteed for all possible uses. All end-users must therefore determine for themselves if the information is suitable for their purposes.



For more information on the project contact:

Maren Catt
Source Water Intern

maren.catt@rvca.ca

or call 613-692-3571, extension 1197